

### Features:

The operators console is built to meet the harsh environments mines present while maintaining high functionality. The PC based system runs Windows 10 and takes full advantage of the touch capabilities. The software interfaces with all Minewise instruments and automatically provides the necessary controls pertinent to the connected device. The system can be powered by a 18v Makita™ battery, 110vac power or from the Silver Reach SR-300.



With one inspection system users from multiple departments can inspect and document the mines diverse infrastructure



When used in conjunction with the Silver Reach SR-300 for long reach applications (up to 300 meters), the console automatically switches to the Lithium Ion power pack powering the winch. The integrated joystick is used to Pan and Tilt the camera when connected. The console provides both 1080p High Definition video and Standard Definition video playback for easy review of collected video. When used with the BlackMap HD, collected 3D models can viewed and exported to a variety of common formats. Collected video and data can be transferred via the USB 3.0 ports

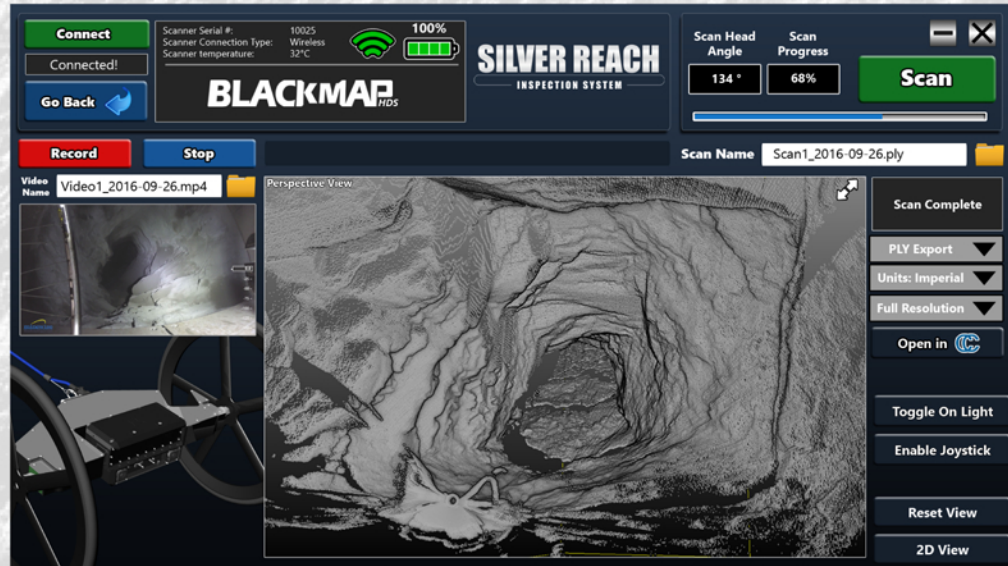


# SILVER REACH

INSPECTION SYSTEM

## Universal Inspection Console

### Product Details



Easy to use software interface allows for a wide user base making data collection accessible to all personnel in the mine.



### Specifications

Whether you are inspecting a blockage in a sandfill borehole, 3D scanning an orepass for sloughing areas or surveying a recently mined out stope, the Universal Inspection Console can meet your needs.

**Compatible with SR-300  
Silver Reach Inspection winch**

**Housed in a strong Pelican™ Case**

- Power Options 1: 18 vdc (Makita Lithium Ion)
- Power Options 2: 110/220 VAC
- Power Options 3: Silver Reach SR-300 power
- Display size: 13.3" IPS screen, Full HD
- Display type: IPS screen
- Display resolution: 1920 x 1080
- User interface: Capacitive touch screen
- Dimension: 41.8 x 33 x 17.3 cm

- Wifi: 802.11a/b/g/n/ac 500mW Dualband
- Weight: 8 lbs
- Temperature: -10 C to +50 C
- Humidity: 90% non-condensing
- Operating system: Windows 10 Pro
- Peripherals: 2 USB 3.0 ports  
1 Gigabit ethernet port
- Connections: Multifunction Military connector

**Minewise Technology Ltd.**

727 Lorne St. | Sudbury | Ontario | P3C 4R5 | Canada

Phone: (705) 674-3332 | Fax: (705) 674-2221

www.minewise.com | sales@minewise.com

**minewise**  
Technology Ltd.  
Technology that pays its way